

## Single pipe corner set

- for small antennas sets.
- vertical adjustment in range of +/-5°
- quick and easy install
- height 3m or 4m
- pipe diameter to install antennas  $\phi 40\text{mm}$

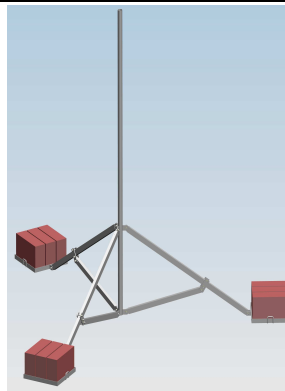
Price: ~~175.00 €~~ **140.00 €**

### Basic technical data:

- 6 concrete blocks – 24kg each
- construction net weight – 9kg
- total weight – 155kg
- distance between block 1.5m x 1.5m

### Set includes:

- aluminum construction
- hardware
- 6 concrete blocks
- 3 belts to secure blocks.



## Single pipe set

- for small antennas sets.
- installing on pitched roof possible
- vertical adjustment in range of +/-10°
- quick and easy install
- height 3m or 4m
- pipe diameter to install antennas  $\phi 40\text{mm}$

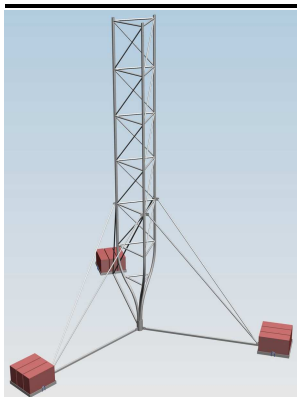
Price: ~~226.00 €~~ **163.00 €**

### Basic technical data:

- 9 concrete blocks 24kg each
- construction net weight – 11kg
- total weight – 227kg
- concrete blocks arrangements:  $r = 1.5\text{m} / 120^\circ$

### Set includes:

- aluminum construction
- hardware
- 9 concrete blocks
- 3 belts to secure blocks.



## Truss set

### Light version H=4m

- for small antennas sets.
- high torsional stiffness
- installing on pitched roof possible
- vertical adjustment in range of +/-10°
- quick and easy install
- height 3m or 4m
- climbing on the construction allowed
- pipe diameter to install antennas  $\phi 34\text{mm}$

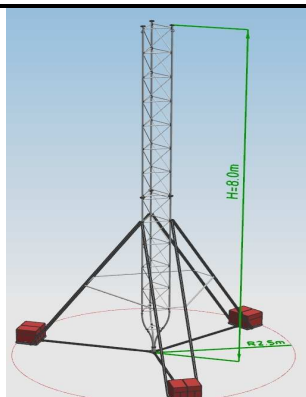
Price: ~~292.00 €~~ **255.00 €**

### Basic technical data:

- 9 concrete blocks: 24kg each
- construction net weight: 14kg,
- total weight: 230kg,
- concrete blocks arrangement  $r = 1.5\text{m} / 120^\circ$
- truss width: 500mm (250mm option)

### Set includes:

- aluminum construction
- hardware
- 9 concrete blocks
- 3 belts to secure blocks.
- lightning rod



## Truss set

### Light version H=8m

- for small antenna sets.
- high torsional stiffness
- installing on pitched roof possible
- vertical adjustment in range of +/-10°
- quick and easy install
- height 8m
- climbing on the construction allowed
- pipe diameter to install antennas  $\phi 34\text{mm}$

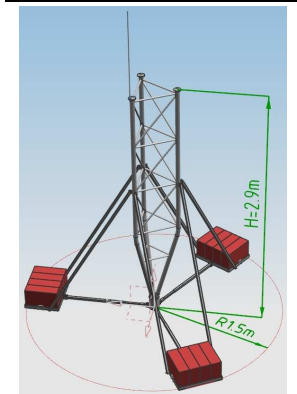
Price: **466.00 €**

### Basic technical data:

- 18 concrete blocks: 24kg each
- construction net weight: 23kg,
- total weight: 470kg,
- concrete blocks arrangement  $r = 2.5\text{m} / 120^\circ$
- truss width: 500mm

### Set includes:

- aluminum construction
- hardware
- 18 concrete blocks
- 3 belts to secure blocks.
- lightning rod



## Truss set

### Heavy duty version H=2.9m

- for small base or radio link.
- high torsional stiffness
- installing on pitched roof possible
- vertical adjustment in range of +/-10°
- quick and easy install
- height 2.9m
- climbing on the construction allowed
- pipe diameter to install antennas  $\phi 50\text{mm}$

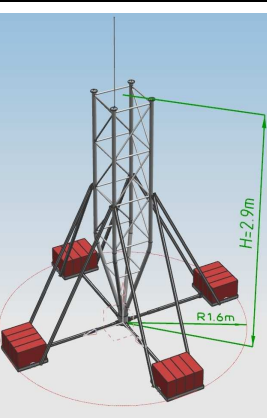
Price: **366.00 €**

### Basic technical data:

- 12 concrete blocks: 24kg each
- construction net weight: ~25kg,
- total weight: 320kg,
- concrete blocks arrangement  $r = 1.5\text{m} / 120^\circ$
- truss width: 500mm

### Set includes:

- aluminum construction
- hardware
- 9 concrete blocks
- 3 belts to secure blocks.
- lightning rod



## Truss set

### Heavy duty version, 4 supports H=2.9m

- for small base or radio link.
- high torsional stiffness
- installing on pitched roof possible
- vertical adjustment in range of +/-10°
- quick and easy install
- height 2.9m
- climbing on the construction allowed
- pipe diameter to install antennas  $\phi 50\text{mm}$

Price: **483.00 €**

### Basic technical data:

- 16 concrete blocks: 24kg each
- construction net weight: ~31kg,
- total weight: 415kg,
- concrete blocks arrangement  $r = 1.6\text{m} / 120^\circ$
- truss width: 500mm

### Set includes:

- aluminum construction
- hardware
- 16 concrete blocks
- 4 belts to secure blocks.
- lightning rod